



3form OEM

3formoem.com

MIRAGGIO

Miraggio

Transform nearly any interior environment with EFI's Miraggio illuminated glass. Achieve a unique ambience in modern entertainment centers and closets to the most traditional kitchen cabinets.

Uses:

- Cabinets, see page 4
- Shelving Systems, see page 6

Features:

- Custom sizes available
 - Minimum Shelf size is 12"
 - Requires 8mm deduction from glass width for included shelf supports
- No minimum orders

LED Options

- Cool White LED (4000k, 2.93 watts/foot)
- Warm White LED (3000k, 2.93 watts/foot)



Dimming/Colour Options



Cool White - Off



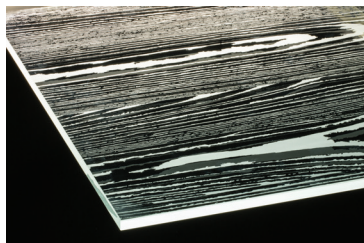
Cool White - 33% lit



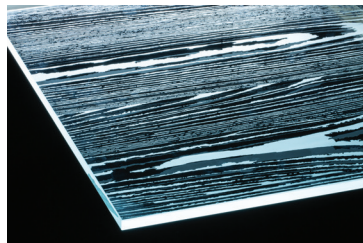
Cool White - 66% lit



Cool White - 100% lit



Warm White



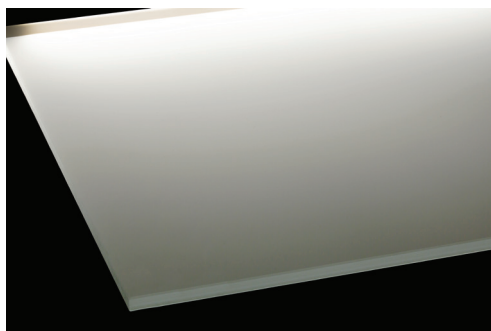
Cool White

Weight Capacity Guidelines

Shelf span in mm/inches (end supports only)
Weight capacity in pounds per square foot with weight evenly distributed across shelf

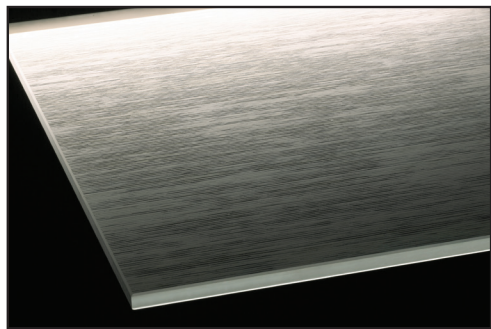
Glass Thickness	305mm (12")	610mm (24")	914mm (36")
10mm (3/8")	196.7	45.5	17.5
The above information does not constitute a warranty of merchantability or fitness for any particular purpose. Actual performance may vary in depending on application and supports used.			
Example Calculation: 36"W x 12"D in a 10mm (3/8") thickness $\frac{36 \times 12}{144} = 3 \text{ square feet}$ 3 sq. ft. x 17.5 lbs. per sq. ft. = 52.5lbs capacity evenly spaced on shelf			

Glass Options



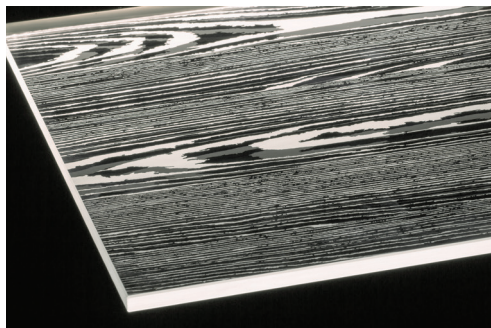
SoftEtch™

SoftEtch™ is an eco-friendly, smudge-proof glass, soft to the touch and customizable in nearly any color for endless interior design applications. SoftEtch™ resists stains and is non-reflective leaving no glare or fingerprints on this easy-to-maintain, eye-catching glass. Any standard glass cleaner can be used on SoftEtch™ glass without the use of expensive sealers.



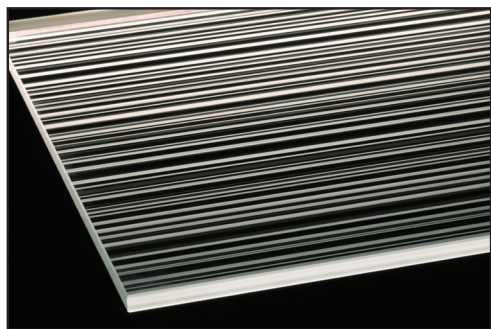
SoftEtch™ Pattern - BI-Cannes

The BI-CANNES pattern is a series of organic horizontal or vertical lines that can be used in many different applications. Utilizing the SoftEtch™ process are combined to obtain a high quality product that is sure to enhance any project you may encounter.



SoftEtch™ Pattern - Timber (Single Etch)

The TIMBER pattern mixes the traditional look of wood with the modern aesthetics of glass. Combine the SoftEtch™ glass with the unmistakable pattern for a glass offering that is superior to other materials.



SoftEtch™ Pattern - Bi-Line

The BI-LINE pattern is a SoftEtch™ glass that consists of parallel lines varying in distances. This pattern can be used with a horizontal or vertical pattern.



Miraggio for Cabinets



Mounting Instructions

Each application varies and may require that the shelf wiring be installed on the opposite end compared to the factory installed end. Leaving the etched side upwards, slowly pull the **A** LED strip off the glass. Flip and gently guide the LED strip onto a small section of the shelf. Continue pressing the length of the extrusion on to the edge, do not slide it on. This could damage the LED's.

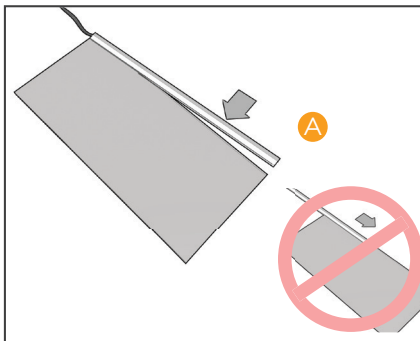
B Insert shelf clips in 5mm (3/16") holes. To calculate the shelf width, subtract 8mm(5/16") from the available width.

C Hide shelving wires by drilling through the cabinet and/or by utilizing our cable management system. **D**

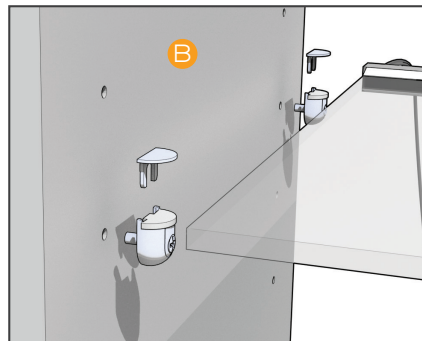
See the relevant wiring diagrams for cable connections mentioned below. Plug the male electrical connectors into the transformer. Plug the switch into the transformer, and plug the transformer into the wall.

E Cool/Warm LED diagram

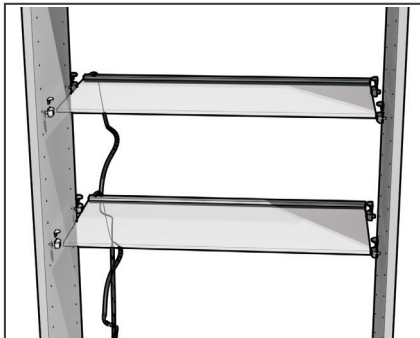
Reapply LED Strip if necessary



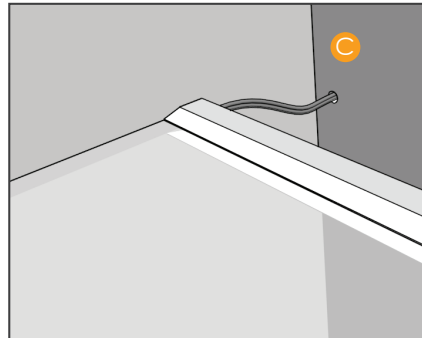
Install glass shelf clips and secure



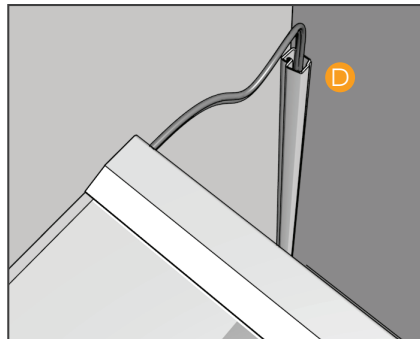
Cabinet Install



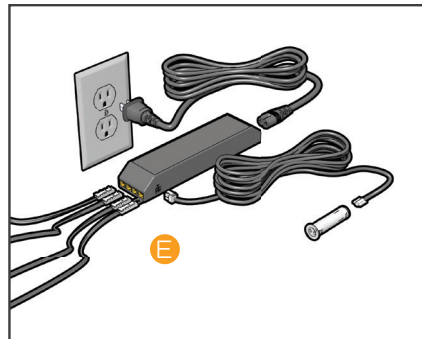
Drill through cabinet




Cable management system



Cool/Warm LED Wiring Diagram





▲ Miraggio - Timber
Cool White

▲ Logic
Aluminum

Miraggio for Shelving Systems



Mounting Instructions

Each application varies and may require that the shelf wiring be installed on the opposite end compared to the factory installed end. Leaving the etched side upwards, slowly pull the LED strip off the glass. **A** Flip and gently guide the LED strip onto a small section of the shelf. Continue pressing the length of the extrusion on to the edge, do not slide it on. This could damage the LED's.

To calculate the shelf width, we recommend subtracting 2mm (1/16") from the width between the up-rights for a more relaxed fit.

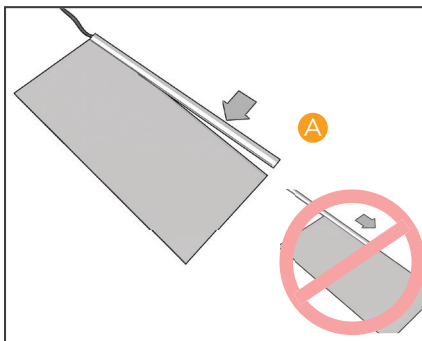
B Install the shelf into the glass holding brackets and secure.

C Hide shelving wires utilizing our cable management system.

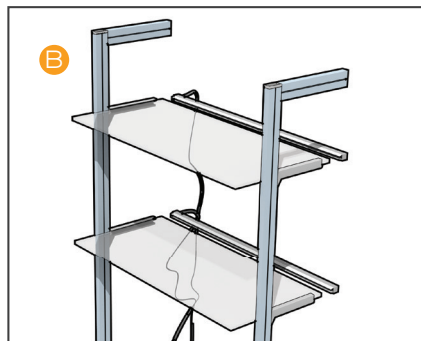
See the relevant wiring diagrams for cable connections mentioned below. Plug the male electrical connectors into the transformer. Plug the switch into the transformer, and plug the transformer into the wall.

D Cool/Warm LED diagram

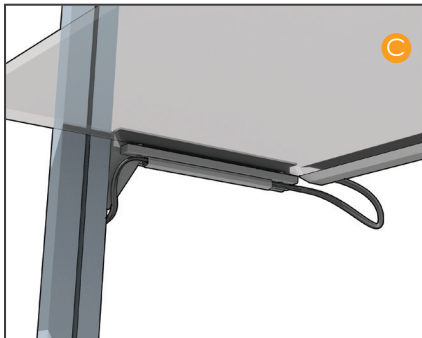
Reapply LED Strip if necessary



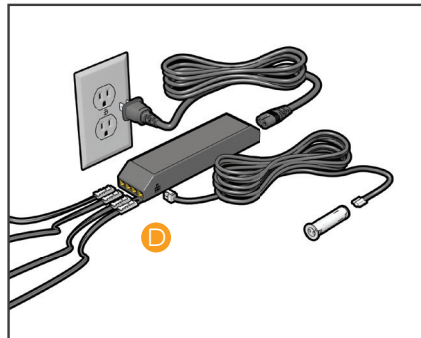
Install glass shelf and secure



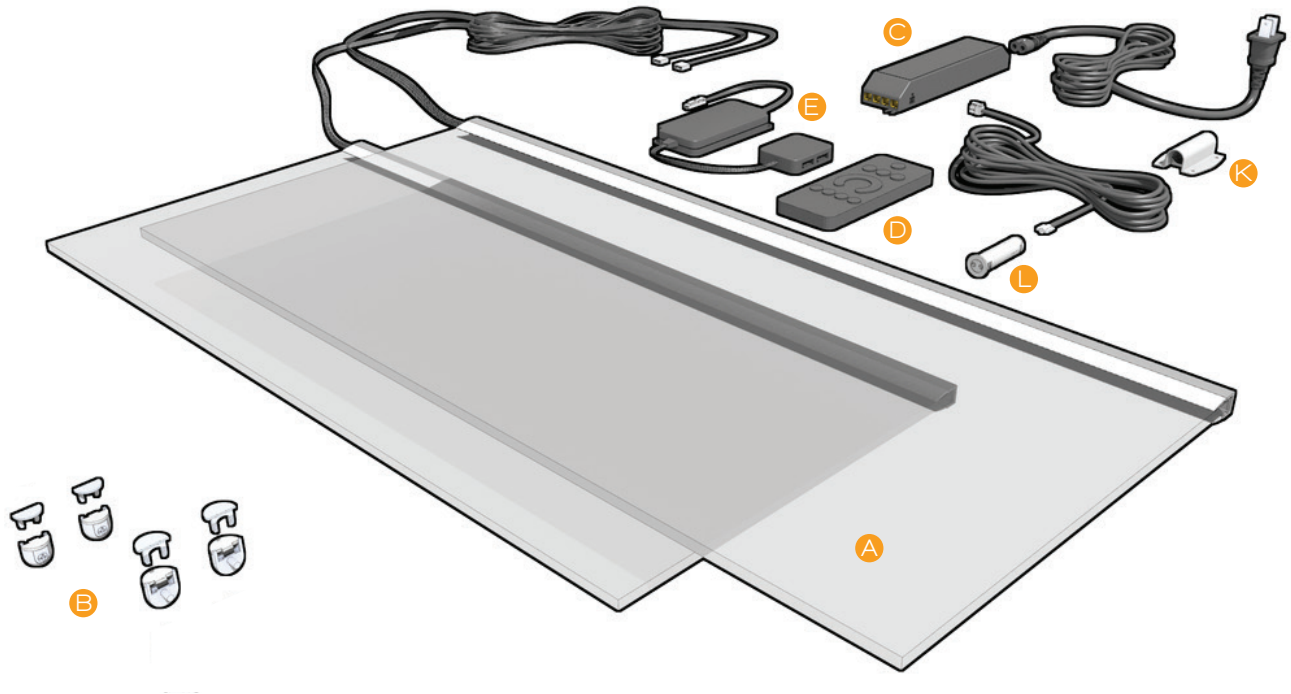
Cable Management System



Cool/Warm LED Wiring Diagram



Parts List



White LED (Cool or Warm) - Standard equipment

- A** Item 531001: Transformer - 60w (Will power up to 6 shelves)

Optional Equipment

- F** Item 531007: 12V, extension cable LED to Driver, black, 500mm length
- G** Item 531009: 12V, extension cable LED to Driver, black, 2000mm length



3form OEM

3formoem.com

Customer Service
oem@3-form.com
801.649.2500