

**3form** OEM

ALUMINUM  
PROFILES

[3formoem.com](http://3formoem.com)



A photograph of a glass manufacturing factory. The scene shows a complex industrial environment with numerous vertical metal frames and rollers. Large sheets of green-tinted glass are being processed. The lighting is bright, coming from overhead fixtures. A semi-transparent dark grey rectangular area is overlaid on the left side of the image, containing white text.

# Driven by design. Powered by partnerships.

Crafting bold and distinctive designs fuels our creativity.

We look to the future with confidence in our ability to deliver fresh, modern glass and aluminum options of the highest quality.

The power behind our confidence lies in the remarkable partnerships we have built with our customers and suppliers.

# CONTENT

Aluminum Profiles	16
Samples	20

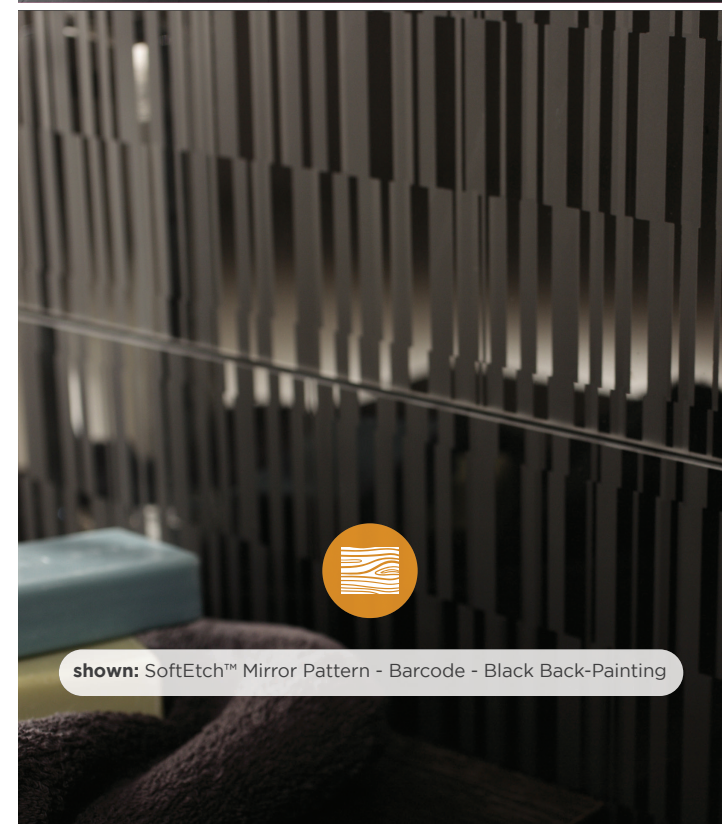
# CONTACT

## Sales

Brian Ross  
General Manger  
brian.ross@3-form.com  
801.910.1744

## Customer Service

oem@3-form.com  
801.649.2500



# Aluminum Frames

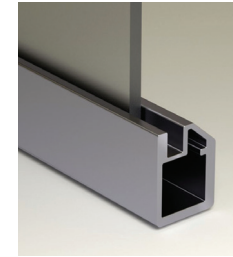
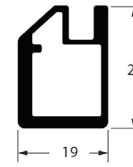
Options range from a low profile frame that creates a clean, modern look to the traditional profile of a classic aluminum frame.



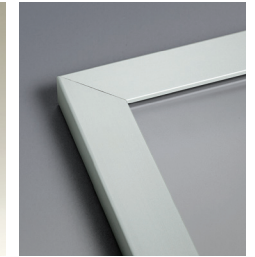
**shown:** Ecoresin - Kathali Greys + Air Profile w/Hidden Hinge

## 1505 (Air Thin)

Glass Thickness: 4mm  
 Glass Subtract: 38.5 mm  
 Hinge Cup Options: special hinges required  
 Typical Handle Location: N/A  
 Min. Handle Location Off Edge: N/A  
 Height: Min. 135mm (5.4") - Max. 2100mm (83")  
 Width: Min. 203mm (8.0") - Max. 609.6mm (24")  
 Max. Door Weight: 20kg (44 lbs)  
 Available Finishes: Aluminum, Titanium

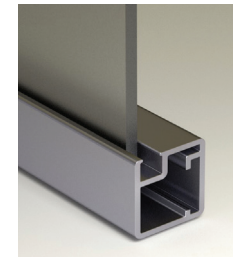
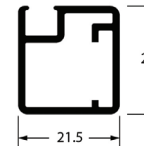


DOOR



## 1905

Glass Thickness: 4mm  
 Glass Subtract: 36.5mm  
 Hinge Cup Options: special hinges required  
 Typical Handle Location: 10.5mm  
 Height: Min. 127mm (5") - Max. 1500mm (59")  
 Width: Min. 127mm (5") - Max. 500mm (20")  
 Available Finishes: Aluminum, Stainless, Polished  
 Powder Coating Available: White, Bronze, Charcoal, Black

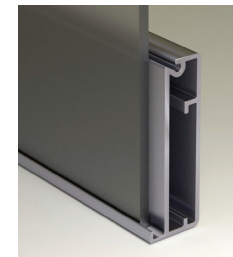


DOOR

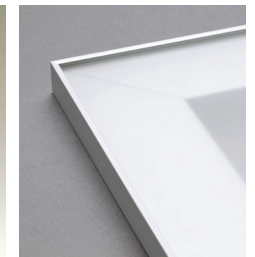


## 1919

Glass Thickness: 4mm  
 Glass Subtract: 3.9mm  
 Hinge Cup Options: 26mm, 35mm, 40mm  
 Typical Handle Location: 32mm  
 Height: Min. 157mm (6 3/16") - Max. 2400mm (96")  
 Width\*: Min. Width: 157mm (6 3/16") -Max. 610mm (24")  
 Available Finishes: Aluminum  
 Powder Coating Available: White, Bronze, Charcoal, Black

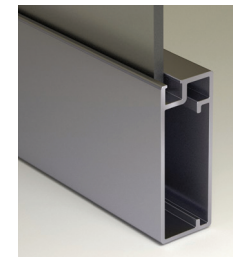


DOOR | DRAWER

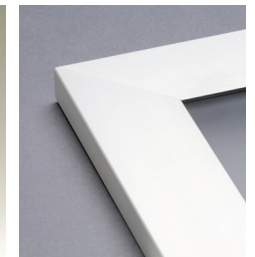


## 1927

Glass Thickness: 4mm  
 Glass Subtract: 98.5mm  
 Hinge Cup Options: 26mm, 35mm, 40mm  
 Typical Handle Location: 27mm  
 Height: Min. 157mm (6 3/16") - Max. 2400mm (96")  
 Width: Min. 157mm (6 3/16") - Max.\*: 610mm (24")  
 Available Finishes: Aluminum, Stainless  
 Powder Coating Available: White, Bronze, Charcoal, Black

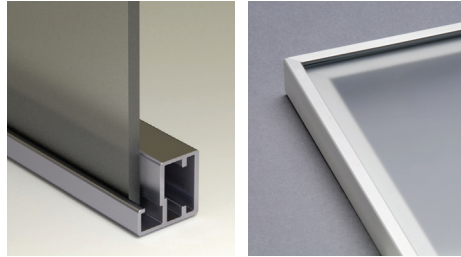
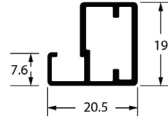


DOOR | DRAWER



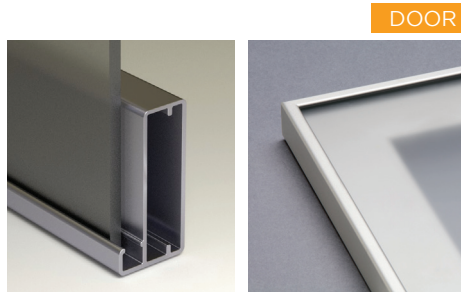
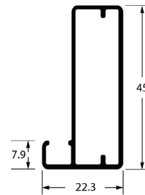
## 1930

Glass Thickness: 4mm  
Glass Subtract: 5.5mm  
Hinge Cup Options: special hinges required  
Typical Handle Location: 13.3mm  
Height: Min. 127mm (5") - Max. 1500mm (59")  
Width: Min. 127mm (5") - Max Width: 500mm (20")  
Available Finishes: Aluminum  
Powder Coating Available: White, Bronze, Charcoal, Black



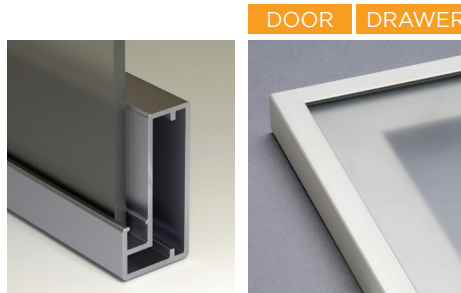
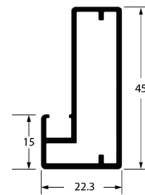
## 1933

Glass Thickness: 4mm  
Glass Subtract: 5.5mm  
Hinge Cup Options: 26mm, 35mm  
Typical Handle Location: 26.5mm  
Height: Min. 127mm (5") - Max. 2400mm (96")  
Width: Min. 127mm (5") - Max.\* 610mm (24")  
Available Finishes: Aluminum, Stainless  
Powder Coating Available: White, Bronze, Charcoal, Black



## 1936

Glass Thickness: 4mm  
Glass Subtract: 20.5mm  
Hinge Cup Options: 26mm, 35mm  
Typical Handle Location: 30mm  
Height: Min. 127mm (5") - Max. 2400mm (96")  
Width: Min. 127mm (5") - Max.\* 610mm (24")  
Available Finishes: Aluminum, Stainless  
Powder Coating Available: White, Bronze, Charcoal, Black



## 1939

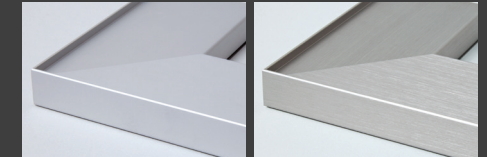
Glass Thickness: 4mm  
Glass Subtract: 5.5mm  
Hinge Cup Options: 26mm, 35mm, 40mm  
Typical Handle Location: 39.8mm  
Height: Min. 157mm (6 3/16") - Max. 2400mm (96")  
Width: Min. 157mm (6 3/16") - Max.\* 610mm (24")  
Available Finishes: Aluminum  
Powder Coating Available: White, Bronze, Charcoal, Black



# Aluminum Frame Finish Options

Select a profile frame, with one of our finish options to accent your designed space.

## Finishes



Aluminum

Stainless

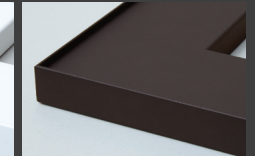


Polished

## Powder Coating



White



Dark Bronze



Charcoal



Black

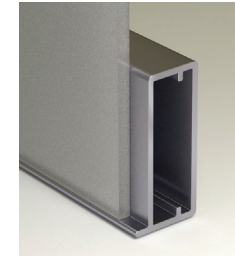
Textured powder coated finish



shown: Clear Low Iron + Custom Digital Printing

## 1955

Glass Thickness: 4mm (opaque)  
 Glass Subtract: 4.2mm  
 Hinge Cup Options: 26mm, 35mm  
 Typical Handle Location: 22.5mm  
 Height: Min. 127mm (5") - Max. 1800mm (71")  
 Width: Min. 127mm (5") - Max.\* 610mm (24")  
 Available Finishes: Aluminum, Stainless  
 Powder Coating Available: White, Bronze,  
 Charcoal, Black  
 \* Backpaint required

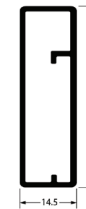


DOOR



## 1960

Glass Thickness: 4mm (opaque)  
 Glass Subtract: none  
 Hinge Cup Options: 26mm, 35mm, 40mm  
 Typical Handle Location: 30mm  
 Height: Min. 157mm (6 3/16") - Max. 1800mm (71")  
 Width: Min. 157mm (6 3/16") - Max.\* 610mm (24")  
 Available Finishes: Aluminum  
 Powder Coating Available: White, Bronze,  
 Charcoal, Black  
 \* Backpaint required

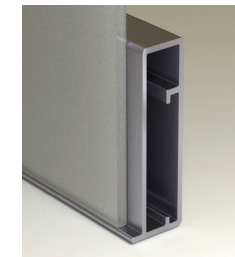


DOOR | DRAWER



## 1965

Glass Thickness: 4mm (opaque)  
 Glass Subtract: 4.2mm  
 Hinge Cup Options: 26mm, 35mm, 40mm  
 Typical Handle Location: 30mm  
 Height: Min. 157mm (6 3/16") - Max. 1800mm (71")  
 Width: Min. 157mm (6 3/16") - Max.\* 610mm (24")  
 Available Finishes: Aluminum, Stainless, Polished  
 Powder Coating Available: White, Bronze,  
 Charcoal, Black  
 \* Backpaint required

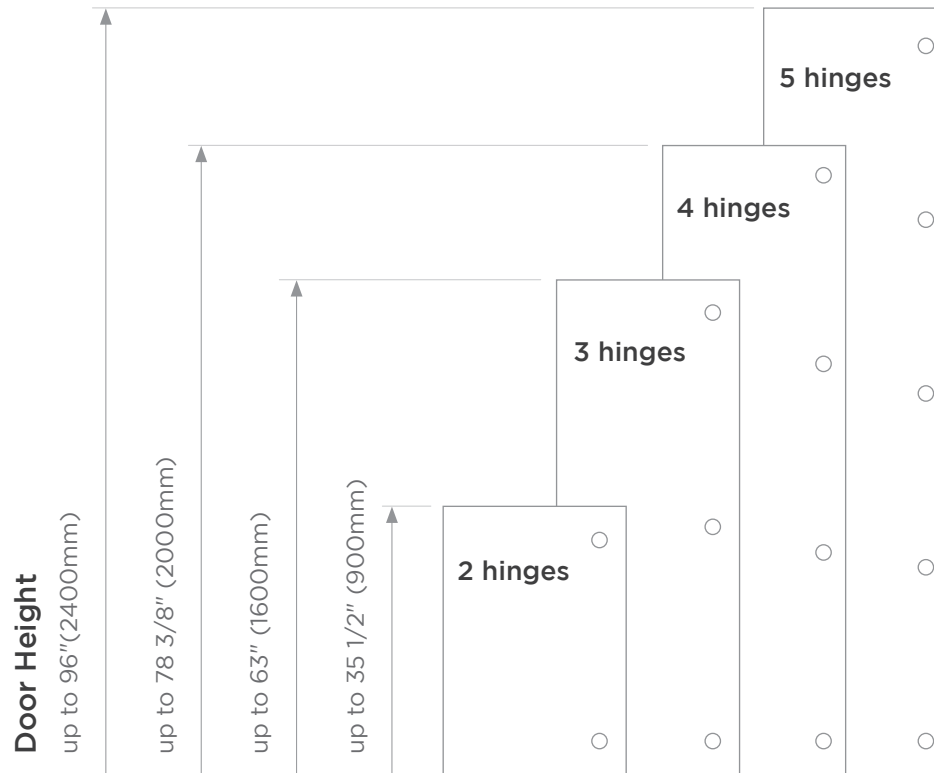


DOOR | DRAWER



# Hinge Guide

Door Width  
up to 24" (600mm)



## Sales

Brian Ross  
General Manger  
brian.ross@3-form.com  
801.910.1744

## Customer Service

oem@3-form.com  
801.649.2500



shown: Clear Low iron + White Back-Painting



# POWERFUL PARTNERSHIPS

The power of our brand begins with companies who believe in the commitment to excellence and to the service we demonstrate with each order.

True partnerships are built by investing in a relationship that is mutually beneficial for both parties. Contact us to learn about the power of partnering with EFI.

[3formoem.com](http://3formoem.com)

## Sales

Brian Ross  
General Manger  
brian.ross@3-form.com  
801.910.1744

## Customer Service

oem@3-form.com  
801.649.2500

## Locations

Salt Lake City  
2300 South 2300 West  
Salt Lake City, UT 84119

North Carolina  
500 Indeneer Dr #4  
Kernersville, NC 27284